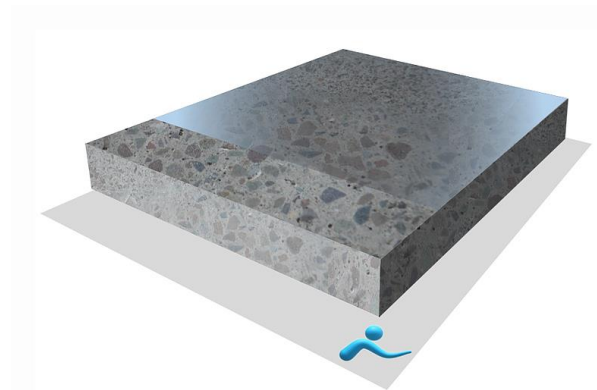




BIF EP Primer-100

BIF EP Primer-100 is a two-pack high solids, epoxy resin bonding and priming coat. It is designed for easy application, with good surface wetting properties.

BIF EP Primer-100 is principally designed to bond thin section resin based screeds and toppings to cementitious and other surfaces. It displays excellent adhesion onto concrete substrates.



Thickness	172-215 microns DFT 5 kg will cover 23m ² at 200 microns WFT
Pot life	30 minutes
Overcoat Interval	8 hours or once surface has lost tackiness
Pedestrian Traffic	18 - 24 hours
Heavy Traffic	48 hours
Full Chemical Cure	7 Days

Preparation of Surfaces

New Concrete Floors: New concrete must be clean, sound, dry, fully cured and surface laitance removed by vacuum enclosed shot blasting or mechanical grinding, a minimum strength of 25N/mm² is required.

Existing Concrete Floors: Remove all dirt, oil, grease, old paint or any other surface contaminants by vacuum enclosed shot blasting, scarifying or mechanical grinding. Fats, oils or greases must be removed by mechanical means and detergent washing and make sure all residue of detergent is washed and removed by rinsing with clean water. Local repairs should be carried out with the primer resin mixed with Kiln Dried Sand at a ratio of between 1:3 – 1:5 by weight.

BIF EP Primer-100 is suitable for application onto concrete and other substrates where the relative humidity is less than 75% RH. Hygrometer readings should be completed in accordance with **BS 8203** to confirm the RH of the substrate prior to application. If the RH is above 75% then **BIF EP Primer-110** should be used.

Health and Safety

BIF EP Primer-100 is formulated from materials designed to achieve the highest level of performance as safely as possible. However, specific components require proper handling and suitable equipment, this information is given in the relevant safety data sheets.

In all cases, spillages or skin contamination should be cleaned as soon as practically possible, by dry wiping of the affected area, and thorough washing with soap and water. The information given in this data sheet is derived from tests and experience with the products and is believed to be reliable.

Application

The ambient temperatures of the areas should not be allowed to fall below 15C throughout the application and the curing period, as this could have an adverse effect on the appearance and colour of the system.

Surface temperature must be above 10C.

Where possible it is recommended that the application area is heated to a minimum temperature of 15C ideally to allow the ambient and substrate temperature to stabilise prior to installation.

Mixing

Pre-mix the base component to a uniform consistency then mix the entire contents of the base with the hardener.

If a separate mixing bucket is being used for mixing ensuring all contents of both components are removed from the buckets supplied.

Mix using a slow speed electric mixer for approximately two to three minutes until the two components have fully combined. The mixed unit should be applied immediately by squeegee, roller or brush with a consistent procedure. Floor areas should be cross-rolled to ensure even application and to minimise roller marks.

Coverage rates may vary depending on profile and porosity of the substrate.

The information is offered without guarantee to enable purchasers to determine for themselves the suitability of the product for their particular application. Any specification or advice given by BIF Services Limited is based on the information supplied by the purchaser & we cannot be held accountable for errors or omissions as a result of that information being incorrect or incomplete. Site conditions may also contribute to variation in finish and colour.